

## KeyApps for DOORS

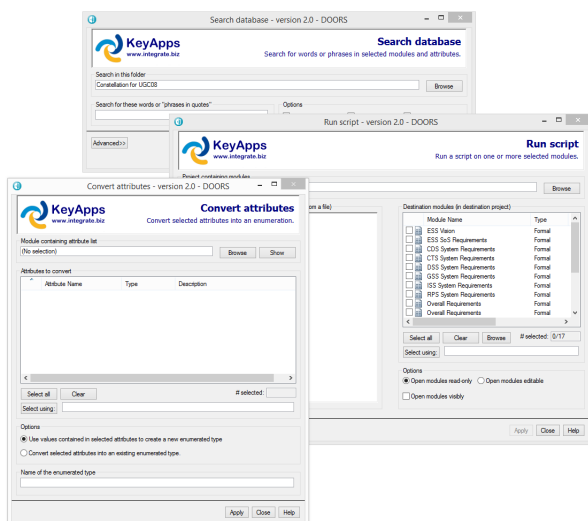
To deploy IBM® Rational® DOORS® efficiently requires more than out-of-the box functionalities. DOORS eXtension Language (DXL) is the scripting language used to control and extend DOORS functions, and many users and organisations rely on home-grown or shareware libraries of DXL utilities.

### Benefits vs Risks of DXL

As well as benefits, there are costs and risks associated with maintaining such bespoke DXL utilities and keeping them under control and up-to-date. Maybe faced with these issues your organisation has restricted or locked-out extensions as a policy. KeyApps™ for DOORS may be an answer to this benefits versus risks dilemma.

### An alternative: COTS DXL utilities

KeyApps is a collection of useful DXL utilities (or "Apps"), each designed to carry out a specific DOORS task, such as copying views across modules, searching the database, or converting attributes. All Apps use consistent user interface elements and principles, making it easy for users to become familiar with the collection.



Each App comes with a help page detailing what the App does and how to use it.

KeyApps offers the rich and varied functionalities of DXL utilities libraries but with a COTS product mentality: all Apps are coded and tested to meet stringent coding standards. Apps are generic and configurable for a wide applicability. The collection is extended regularly by adding new "Apps" that are installed through the Apps manager. Even if you already have your own DXL utilities, you may find KeyApps a useful complement for your set of DXL utilities.

### Controlled Deployment

The deployment of KeyApps allows both control and flexibility. An Apps Manager lets you select which apps are made available for your DOORS installation. Access permissions can also be set for individual users and groups.

### Benefits

- Rich and varied functionality of home-grown/ shareware DXL utilities, but without the costs and risks
- Quality supported COTS DXL utilities with consistent look and feel
- Controlled deployment and access

### Features

- Apps manager for Apps deployment, updates and access rights management
- Consistent user interface look and principles
- Easily extendable library of utilities
- Covers all aspects of DOORS: Database, Modules, Views, Types and Attributes

KeyApps™ is a trademark of Integrate Systems Engineering Ltd

IBM®, the IBM logo, Rational® and DOORS® are registered trademarks of IBM Corps

Visit us at [www.integrate.biz/products](http://www.integrate.biz/products) for more information

